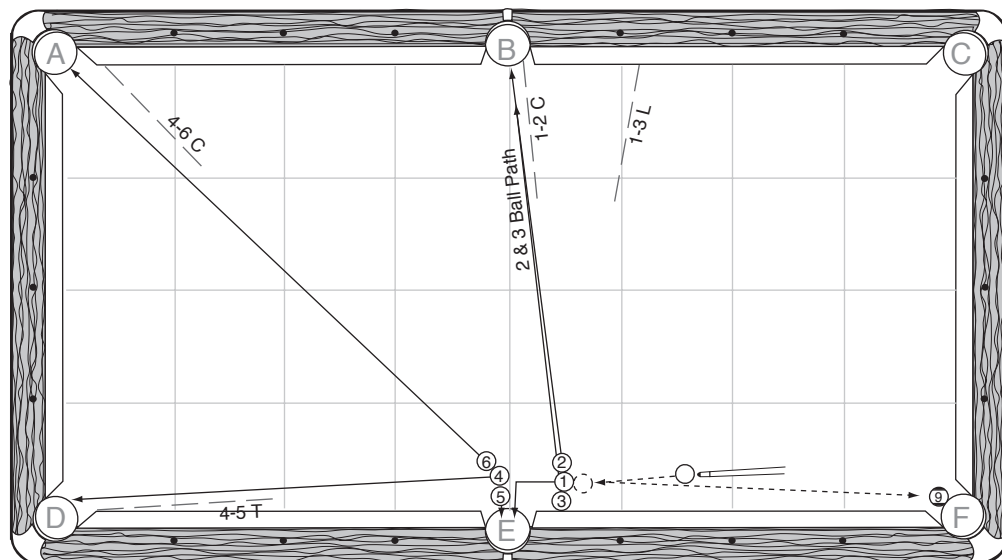


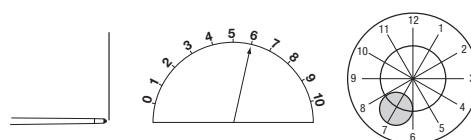
Half Beijing



SUR: 3.5 **Video**

EXR: 3.5

MSR: 85%



To set up this shot you will need to place the 4, 5, and 6-balls exactly as in the Just Showing Off Shot on page 62. The 3-ball should be half the distance from the middle of the side pocket and the first diamond. You may have to adjust the 1, 2, and 3-ball cluster a little.

Place the cue ball about one and a half ball widths from the rail. Aim to hit 90% of the 1-ball. Favor the left side. Hit the cue ball a full tip from center at 7:00. Use a medium hard stroke. If the 3-ball strikes the rail to the right of Pocket B, move the 1-ball very slightly to the right. Should the 3-ball miss to the left of Pocket B, move the 1-ball a little to the left.

I usually tell the crowd to focus hard on the balls at the other end of the table. This enables me to tip the 9-ball into the pocket just in case the cue ball veers away from the rail.