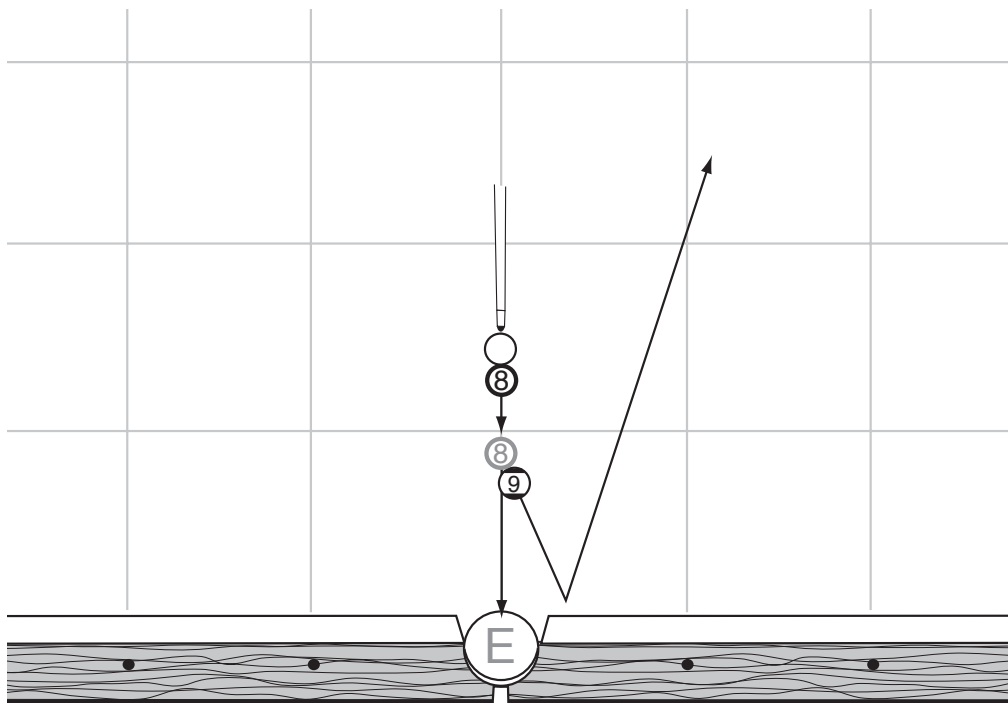
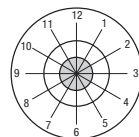
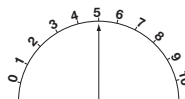


The Jimmy Reid Sneaky 8-Ball Shot



SUR: 2.0 Video
 EXR: 3.0
 MSR: 90%



Jimmy Reid showed me this sneaky little 8-ball shot quite a few years ago. The 9-ball is placed about eight inches from the side pocket and about a quarter ball to the side of a line running between the centers of the side pockets. The cue ball and 8-ball are frozen together with the 8-ball about six to eight inches from the 9-ball. They should be lined up for the side pocket.

Elevate your cue about 20-25 degrees. Grip your cue a little tighter than normal. Hit the cue ball in the center with a **medium stroke**. Make sure to aim straight down the line between the center of the 8-ball and cue ball. The key is to have the feeling that your tip is staying on the cue ball for as long as possible without double hitting the cue ball. You and your friends will be pleasantly surprised to see the 8-ball split the pocket.

This shot is another example of the collision effect. The cue ball stays extremely close to the 8-ball. A 100th of a second after the 8-ball contacts the 9-ball the cue ball will contact the 8-ball again, driving it into the side pocket before it has the chance to be caromed off line.

When good players witness this shot, they invariably request that I play it again, wanting to know the secret.